



Elegant steel panel radiator design

Provides both radiant and convective heat

Well suited for standard efficiency and condensing boilers

Stove enameled finish for scratch and corrosion resistance

Engineered for efficiency

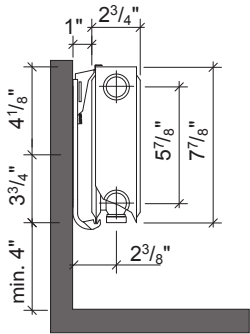
Easy to sub-zone



Ecostyle Steel Panel Radiators

Type 21

(2 3/4" Thickness)



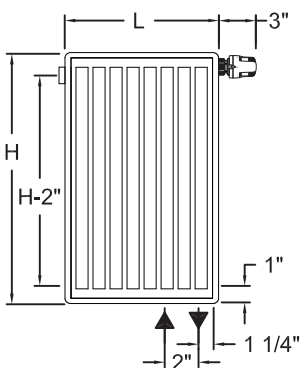
Radiator Model	Height (in)	Length (in)	Output (BTU) @ 180°F	Output (BTU) @ 140°F	Weight (lbs)	Water Content (gal)	Equivalent Baseboard @ 180°F (ft)
B-8.24 ECO	8	24	1,346	781	14.3	0.4	2.25
B-8.36 ECO		36	2,022	1,173	22	0.6	3.40
B-8.48 ECO		48	2,698	1,565	29	0.8	4.5
B-8.56 ECO		56	3,147	1,825	33.5	0.9	5.25
B-8.72 ECO		72	4,046	2,347	43	1.2	6.75
B-8.92 ECO		92	5,172	3,000	55	1.5	8.62
B-8.120 ECO		120	6,742	3,910	77	2.0	11.23

Outputs based on supply temperatures shown, 20° F ΔT and 68° F Room Temperature

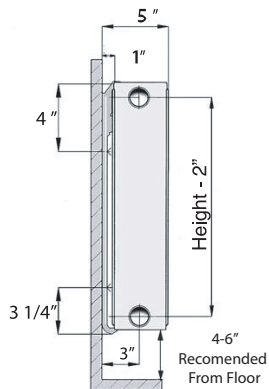
Type 22

(4" Thickness)

Rough In Dimensions



Front View



Side View

Now offering the option for you to purchase radiators in a variety of colors. Please contact us for full details.



Radiator Model	Height (in)	Length (in)	Output (BTU) @ 180°F	Output (BTU) @ 140°F	Weight (lbs)	Water Content (gal)	Equivalent Baseboard @ 180°F (ft)
B-12.16 ECO	12	16	1,705	1,031	15	0.37	3.0
B-12.24 ECO		24	2,562	1,548	22	0.53	4.5
B-12.32 ECO		32	3,414	2,064	29	0.71	6.0
B-12.40 ECO		40	4,266	2,579	37	0.90	7.5
B-12.48 ECO		48	5,119	3,094	44	1.08	9.0
B-12.56 ECO		56	5,971	3,610	51	1.27	10.5
B-12.64 ECO	16	64	6,828	4,128	58	1.43	12.0
B-16.16 ECO		16	2,167	1,310	20	0.48	3.8
B-16.24 ECO		24	3,254	1,967	30	0.71	5.7
B-16.32 ECO		32	4,337	2,622	40	0.95	7.6
B-16.40 ECO		40	5,421	3,277	49	1.19	9.5
B-16.48 ECO		48	6,504	3,932	59	1.43	11.4
B-16.56 ECO	20	56	7,587	4,586	69	1.66	13.3
B-16.64 ECO		64	8,675	5,244	78	1.90	15.2
B-16.71 ECO		71	9,758	5,899	88	2.11	17.1
B-20.16 ECO		16	2,610	1,578	25	0.58	4.6
B-20.24 ECO		24	3,916	2,367	37	0.87	6.9
B-20.32 ECO		32	5,221	3,156	50	1.14	9.2
B-20.40 ECO	24	40	6,526	3,945	62	1.43	11.4
B-20.48 ECO		48	7,831	4,734	74	1.72	13.7
B-20.56 ECO		56	9,137	5,523	86	2.01	16.0
B-20.64 ECO		64	10,442	6,312	98	2.30	18.3
B-24.16 ECO		16	3,037	1,836	30	0.69	5.3
B-24.24 ECO		24	4,551	2,751	45	1.06	8.0
B-24.32 ECO	36	32	6,069	3,669	60	1.40	10.6
B-24.40 ECO		40	7,587	4,586	74	1.74	13.3
B-24.48 ECO		48	9,106	5,504	89	2.09	16.0
B-24.56 ECO		56	10,624	6,422	104	2.43	18.6
B-24.64 ECO		64	12,138	7,337	118	2.80	21.3
B-24.71 ECO		71	13,656	8,255	133	3.14	24.0
B-36.16 ECO	36	16	4,240	2,563	46	0.95	7.4
B-36.24 ECO		24	6,362	3,846	68	1.43	11.2
B-36.32 ECO		32	8,480	5,126	90	1.90	14.9
B-36.40 ECO		40	10,602	6,409	112	2.38	18.6
B-36.48 ECO		48	12,724	7,691	135	2.85	22.3

Outputs based on supply temperatures shown, 20° F ΔT and 68° F Room Temperature